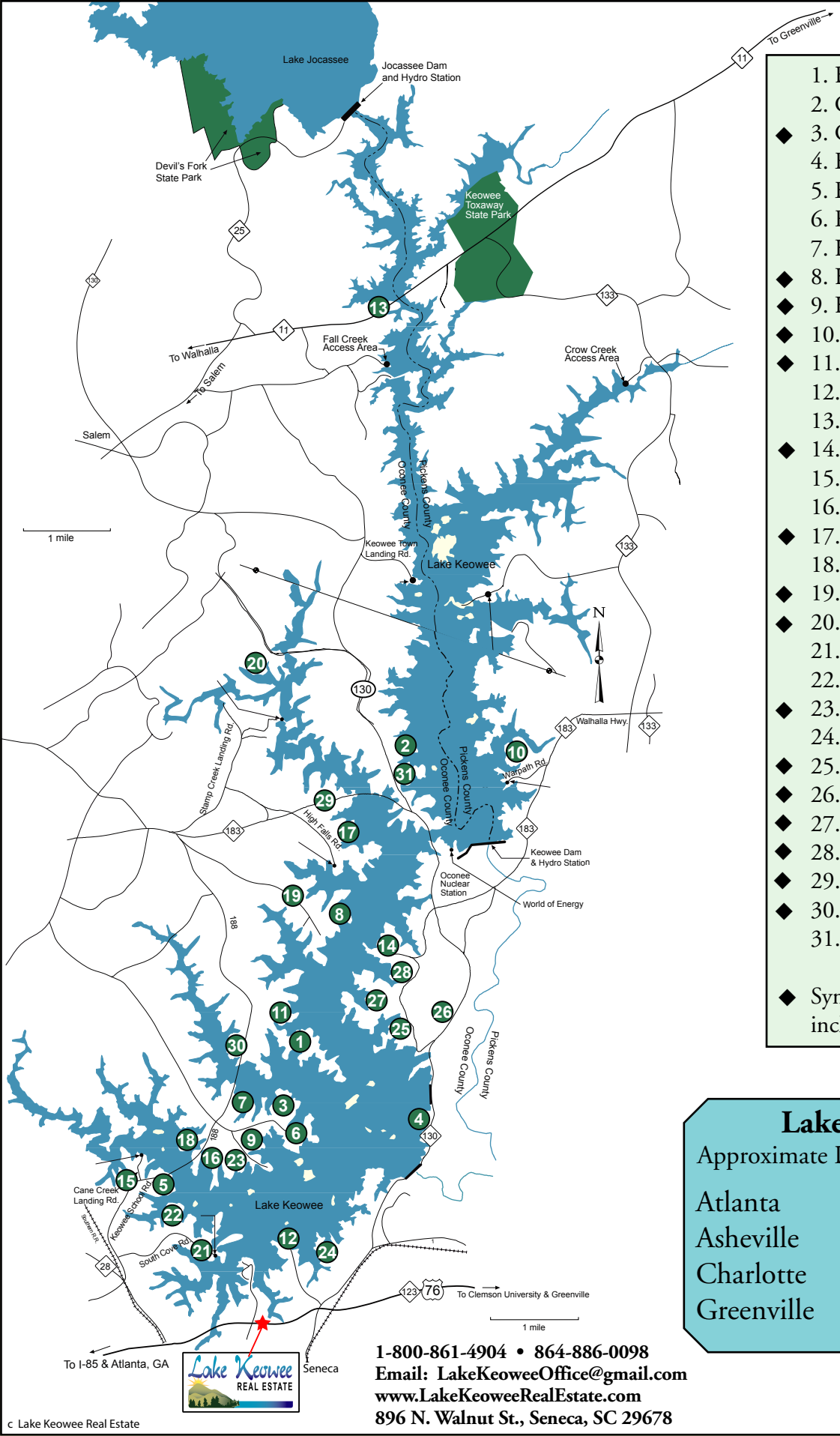


Crescent Communities on Lake Keowee



- 1. Beacon Shores
 - 2. Craggmore
 - ◆ 3. Crestview
 - 4. East Shores
 - 5. Emerald Pointe
 - 6. Fairview Cove
 - 7. Hampton Shores
 - ◆ 8. Harbor Oaks
 - ◆ 9. Hidden Harbor
 - ◆ 10. The Highlands on Lake Keowee
 - ◆ 11. Laurel Ridge
 - 12. Marina Pointe
 - 13. Mariner Pointe
 - ◆ 14. Mountain View Pointe
 - 15. North Harbour
 - 16. Oake Pointe
 - ◆ 17. PineRidge Pointe
 - 18. Pinnacle Pointe
 - ◆ 19. Pointe Harbor
 - ◆ 20. Riverstone
 - 21. South Cove Landing
 - 22. South Oake Pointe
 - ◆ 23. Southwind Bay
 - 24. The Summit
 - ◆ 25. Waterford
 - ◆ 26. Waterford Farms
 - ◆ 27. Waterford Pointe
 - ◆ 28. Waterford Ridge
 - ◆ 29. Waterside Crossing
 - ◆ 30. Westwood Bay
 - 31. Wynward Pointe
- ◆ Symbol indicates detailed map included in this brochure

Lake Keowee
Approximate Driving Time From:

Atlanta	90 min.
Asheville	130 min.
Charlotte	150 min.
Greenville	45 min.

1-800-861-4904 • 864-886-0098
Email: LakeKeoweeOffice@gmail.com
www.LakeKeoweeRealEstate.com
896 N. Walnut St., Seneca, SC 29678

Lake Keowee



FOUNDED BY JOHN HAMRICK

Lake Keowee is one of the cleanest lakes in the United States and boasts over 300 miles of shoreline. Perfect for retirement or second-home living, Lake Keowee offers pristine waters and space for all. Perfect for people who love the great outdoors, Keowee is a picturesque lake with mountain views and only minutes from Clemson University and Greenville, S.C. Crescent Communities offer a variety of community styles with large wooded home sites both on and off the water. Choose from small scale communities with only a handful of spectacular home sites to larger neighbor-hoods with amenities like swim and tennis clubs, waterfront parks and meandering leisure trails.

1-800-861-4904 • 864-886-0098 • Email: LakeKeoweeOffice@gmail.com

www.LakeKeoweeRealEstate.com

896 N. Walnut St., Seneca, SC 29678

Crescent Communities on Lake Keowee are marketed exclusively by Lake Keowee Real Estate

